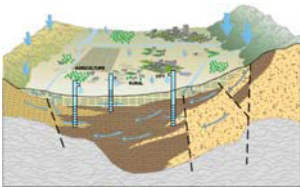
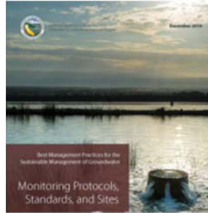


Orientation to the Sustainable Groundwater Management Act and Santa Rosa Plain Water Resources



Marcus Trotta, PG, CHg
Principal Hydrogeologist
Sonoma County Water Agency



Santa Rosa Plain Groundwater Sustainability Agency
Advisory Committee Meeting
October 30, 2017

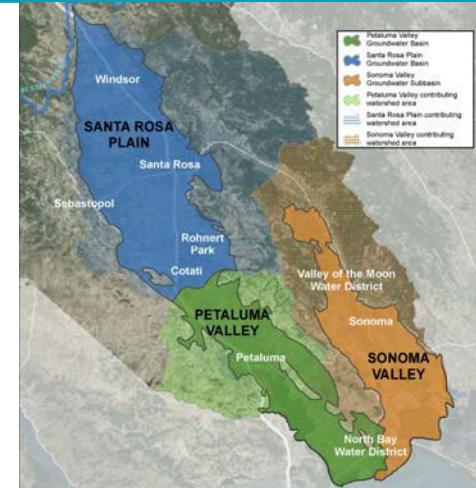
www.sonomacountywater.org

Sustainable Groundwater Management Act

Became law on
January 1, 2015

Applies statewide to
medium and high
priority basins

In Sonoma County,
affects Santa Rosa
Plain, Sonoma Valley,
Petaluma Valley



Required Steps to Groundwater Sustainability

Step one
Form
Groundwater
Sustainability
Agency
June 30, 2017
- Complete

Step two
Develop
Groundwater
Sustainability
Plan
January 31,
2022

Step three
Achieve
Sustainability
20 years
after
adoption of
plan*

* DWR may grant up to two, five-year extensions on implementation upon showing of good cause and progress

Failure to meet any of these deadlines triggers intervention by the State Water Resources Control Board

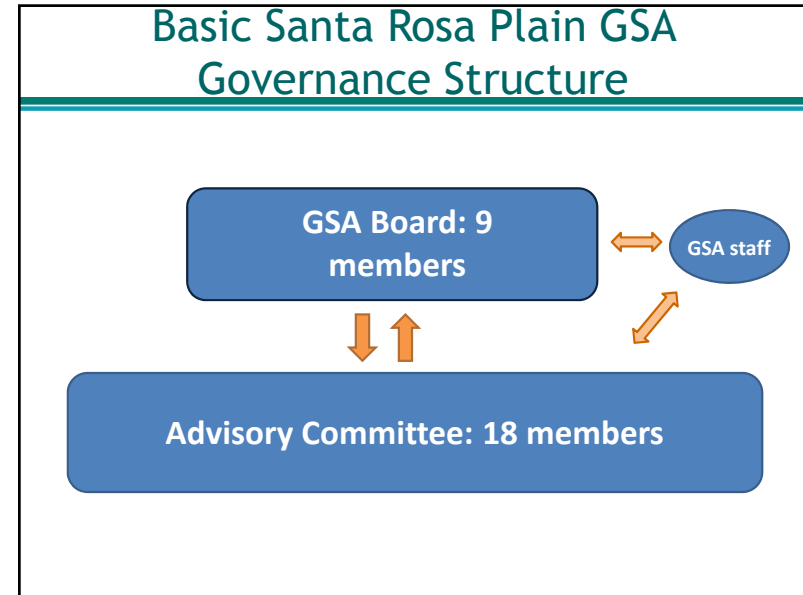
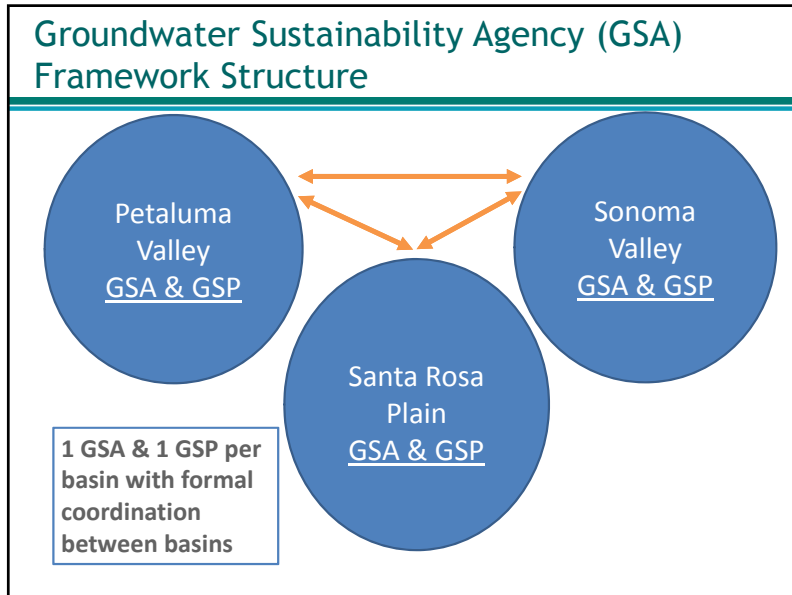
Management Authorities under SGMA

Groundwater Sustainability Agencies have discretionary authority to:

- Conduct studies
- Register & monitor wells
- Set well spacing requirements
- Require extraction reporting*
- Regulate extractions
- Implement capital projects
- Assess fees to cover costs

*GSAs can't require metering of domestic groundwater users, considered "de minimis" users under SGMA (Use 2 acre-feet per year or less for domestic purposes)





Consideration of Interested Parties

GSA's must consider "all interests of all beneficial uses and users of groundwater" including:

- Agriculture
- Domestic users
- Public & private water systems
- Tribes
- Environmental users
- Disadvantaged communities
- Others

Advisory Committees

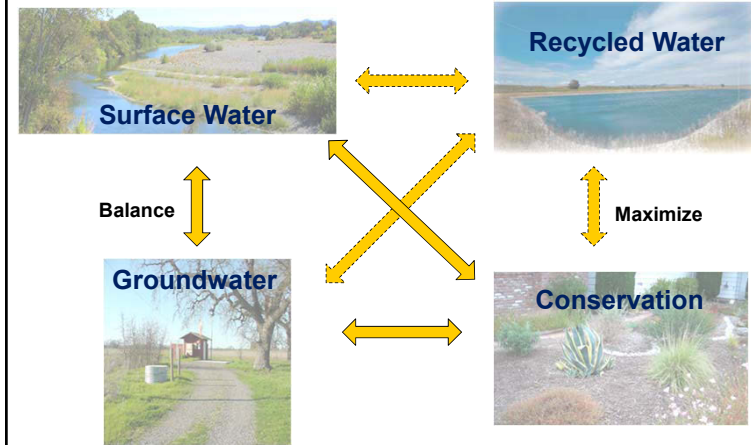
Advise GSA Board on:

- Development and implementation of Groundwater Sustainability plan
 - Sustainability goals, measurable thresholds and objectives
 - Technical and reporting standards
 - Monitoring programs
 - Modeling activities
 - Project and management actions
 - Annual work plans and reports
- Community Outreach
- Fee proposals
- Local Regulations to implement SGMA
- Inter-basin coordination
- General advisory

GSA Primary Future Activities (through June 2018)

- Prepare and adopt Bylaws
- Prepare and submit application for Proposition 1 Grant Funding
- Develop Community Outreach Plan
- Obtain consultant to initiate long-term funding options study
- Initiate development of Groundwater Sustainability Plan

Integrated Water Resource Management Strategies



Russian River Watershed



Recycled Water

- Santa Rosa Regional Water Reuse System
 - Serves cities of Santa Rosa, Cotati, Rohnert Park and Sebastopol, South Park Sanitation District and portions of unincorporated Sonoma County
- Town of Windsor
 - Provides recycled water to irrigate farmlands, urban landscaping
- Airport/Larkfield/Wikiup
 - Provides recycled water for irrigation



Example Regional Water Conservation Efforts

- Sonoma-Marín Saving Water Partnership



- LandSmart Plans

- Sustainable Winegrowing Practices



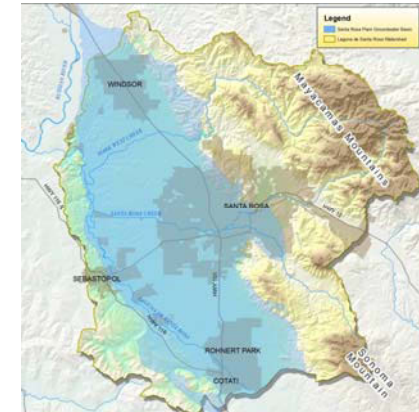
- SlowIt! SpreadIt! SinkIt! StoreIt!



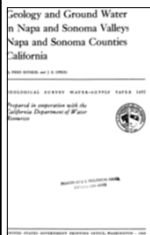
Santa Rosa Plain Water Supply

Water supply in the Santa Rosa plain comes from three primary sources:

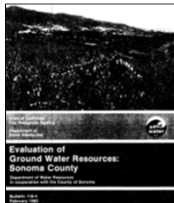
1. Groundwater (>50%)
2. Russian River (~35%)
3. Recycled Water (>10%)



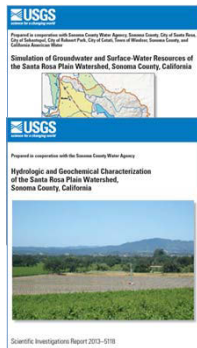
Santa Rosa Plain Groundwater Studies



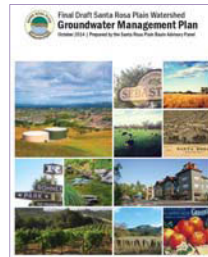
USGS, 1960



DWR, 1982



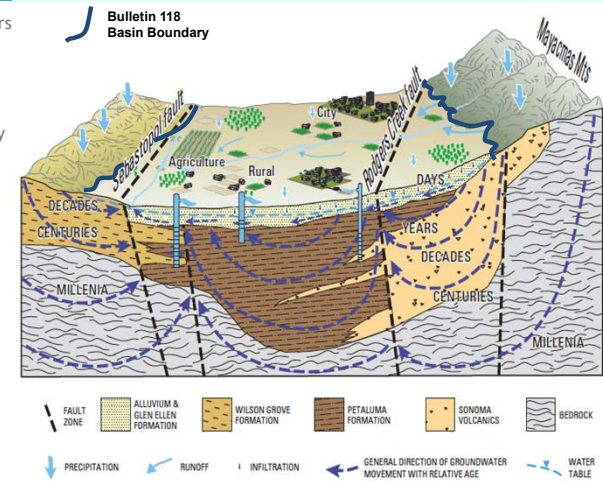
USGS, 2013/2014



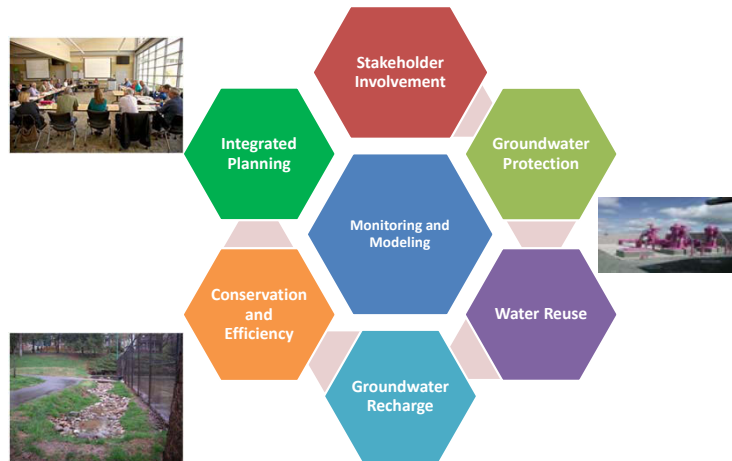
SRPGMP, 2014-2017

Hydrogeologic Conceptual Model

- Groundwater occurs in all four primary formations
- Precipitation and streambed infiltration primary source of recharge
- Primary discharge:
 - Pumping
 - ET
 - Baseflow
- Dominantly flows east to west
- Strong connection between surface water and groundwater



SRP Basin Advisory Panel (2012-2017) Voluntary Management Components



GSP Requirements

Groundwater Sustainability Plans must:

- Describe the basin conditions, using a hydrologic conceptual model
- Describe the basin-specific monitoring network
- Establish minimum thresholds and measurable objectives to avoid undesirable results:
 - Groundwater-level Declines
 - Reduction in Groundwater Storage
 - Seawater Intrusion
 - Water Quality Degradation
 - Land Subsidence
 - Surface Water Depletion
- Identify projects and actions needed to achieve or maintain sustainable conditions within 20 years



Must be completed by January 31, 2022

Maximize Outside Funding through Grant Opportunities

- DWR has allocated ~\$86 million statewide and released a Draft Grant Solicitation through Proposition 1.
- Based on Draft Grant Solicitation, Santa Rosa Plain subbasin could be eligible for up to \$1 Million in grant funding with a 50% local cost share requirement.
- Grant applications due on December 1, 2017.
- Other outside funding opportunities available through DWR
 - Facilitation services
 - Technical assistance, including funding for monitoring networks
- Continue to explore other outside funding opportunities

Draft GSP Scope Objectives for Grant Application

- **Meet SGMA requirements** - establish criteria and management actions to achieve and maintain sustainable groundwater.
- **Build on strong technical foundation** established through previous technical studies and voluntary groundwater management activities.
- **Provide opportunity for significant public and community engagement** and integrate the perspectives and address the needs of the many diverse users and uses of groundwater resources within the basin.
- **Leverage local resources** through continued regional coordination and information sharing.

Questions and Discussion



<http://www.sonomacountygroundwater.org>