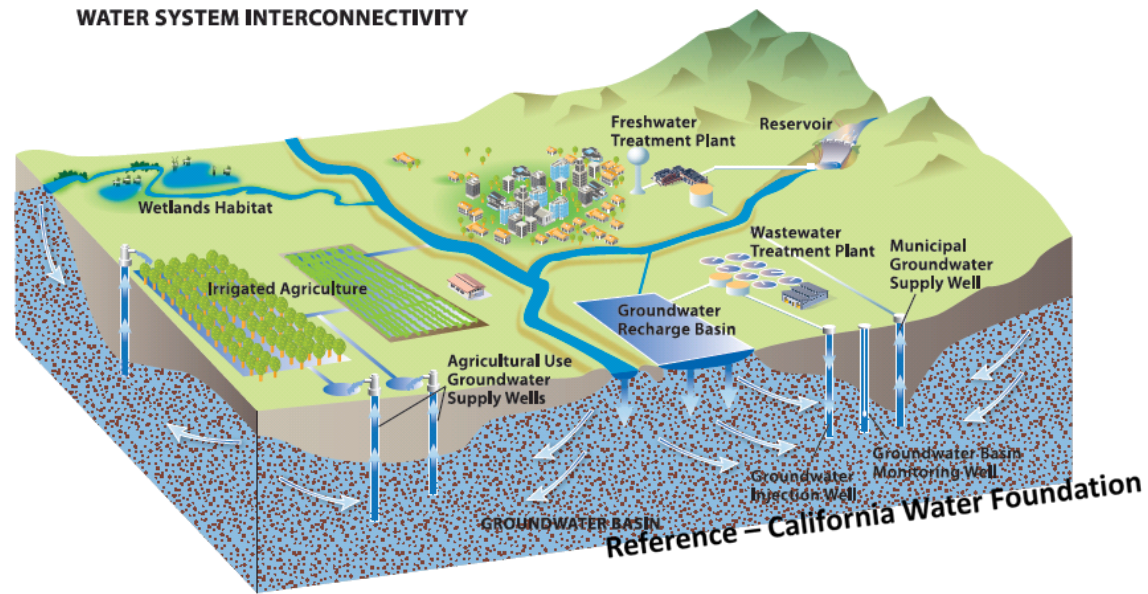


# Update on Sustainable Groundwater Management Act in Sonoma County



**Petaluma Valley Workshop**

**August 17, 2016**

# Presentation Overview



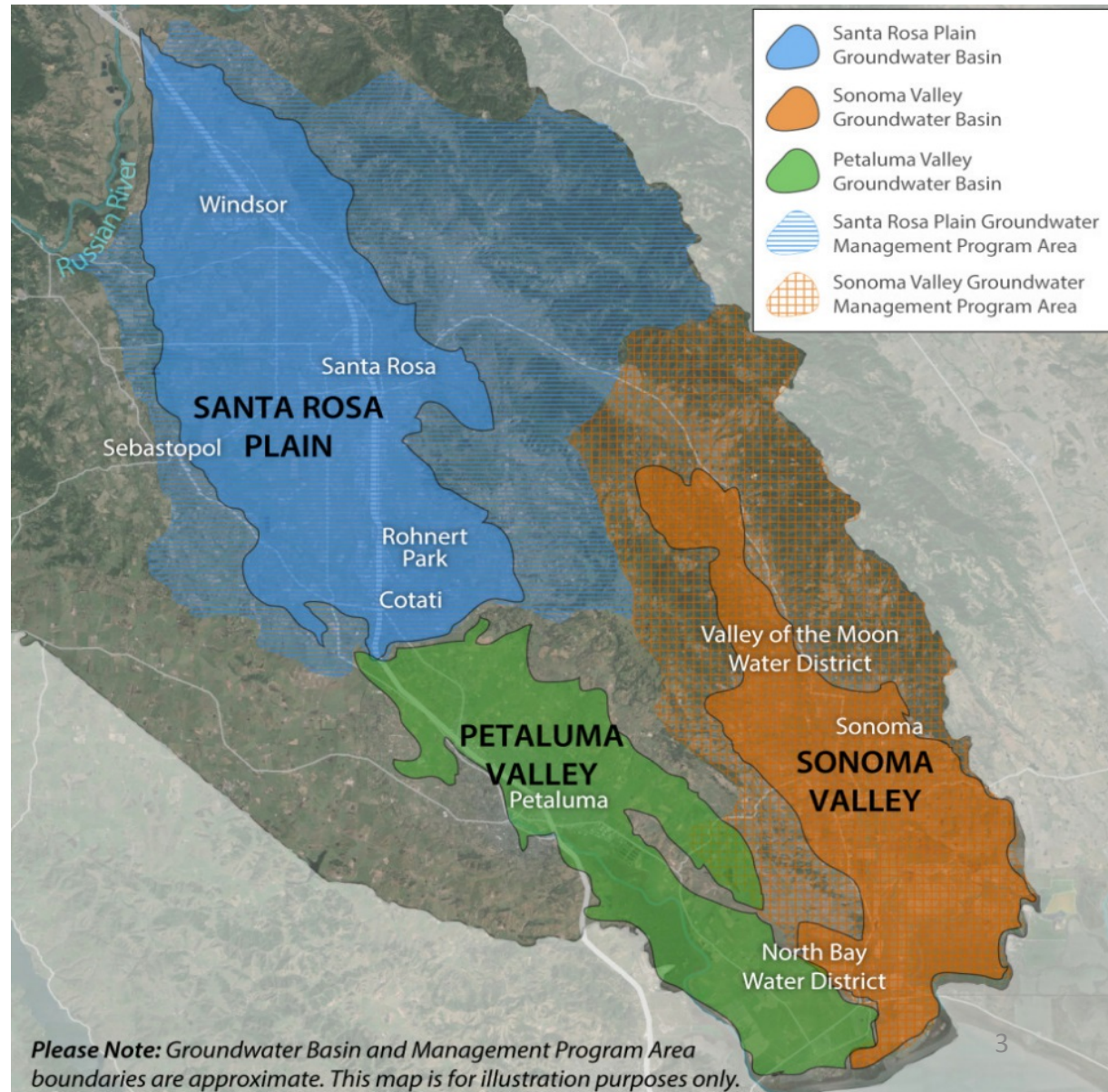
- **Brief Summary:** Sustainable Groundwater Management Act Requirements
- **Implementation in Sonoma County**
  - Petaluma Valley conditions
  - Forming Groundwater Sustainability Agencies
  - Public/Stakeholder Involvement
- **What do You Think?**
- **Next Steps/Timeline**

# SGMA Brief Summary

Became law on  
1/1/2015

Applies statewide  
to medium and  
high priority basins

In Sonoma County,  
affects Santa Rosa  
Plain, Sonoma  
Valley, Petaluma  
Valley



# Required Steps to Groundwater Sustainability

## Step one

Form  
Groundwater  
Sustainability  
Agency  
June 30, 2017

## Step two

Develop  
Groundwater  
Sustainability  
Plan  
January 31, 2022

## Step three

Achieve  
Sustainability  
20 years after  
adoption of  
plan\*

\* DWR may grant up to two, five-year extensions on implementation upon showing of good cause and progress

# Form Groundwater Sustainability Agencies (GSAs) by June 2017

- Local agency or combination of local agencies
- “Local agency” is any public agency that has responsibilities for at least one of the following:
  - Supplies water
  - Manages water
  - Controls land use
- Counties are the default GSA in “unmanaged” areas
- Can be more than one GSA in basin



# Management Authorities under SGMA

## Groundwater Sustainability Agencies have authority to:

- Conduct studies
- Register & monitor wells
- Set well spacing requirements
- Require extraction reporting
- Regulate extractions
- Implement capital projects
- Assess fees to cover costs

**Required to Develop Groundwater Sustainability Plan by 2022**



# Domestic Wells and SGMA

Source: State Water Resources Control Board

## Referred to as “de minimis” users in SGMA

- Use 2 acre-feet per year or less for domestic purposes (equivalent to 1,785 gallons per day – or enough water for about six urban families)

## De minimis users are subject to SGMA, depending on local needs

- GSAs will decide how de minimis users are incorporated
- GSAs can decide to exclude or include
- GSAs can decide on fees
- GSAs *cannot* require metering
- May be subject to reporting and fees to state if intervention occurs

Domestic wells can also be regulated by authorities (counties and cities, etc.) outside the scope of SGMA

# SGMA-Required Interested Parties

GSA must consider “all interests of all beneficial uses and users of groundwater” including:

- All categories of Groundwater Users
- Agriculture
- Domestic Well Users
- Municipal Well Operators and Public Water Systems
- Native American Tribes
- County
- Planning Departments / Land Use
- Local Landowners
- Disadvantaged Communities
- Business
- Federal Government
- Environmental Uses
- Surface Water Users (if connection between surface and ground water)



# Local Implementation: GSA-Eligible Agencies

SANTA ROSA PLAIN BASIN	PETALUMA VALLEY BASIN	SONOMA VALLEY BASIN
City of Cotati	City of Petaluma	City of Sonoma
City of Rohnert Park	North Bay Water District	North Bay Water District
City of Santa Rosa	Sonoma County	Valley of the Moon Water District
City of Sebastopol	Sonoma County Water Agency	Sonoma County
Town of Windsor	Sonoma Resource Conservation District	Sonoma County Water Agency
Sonoma County		Sonoma Resource Conservation District
Sonoma County Water Agency		
Sonoma Resource Conservation District		

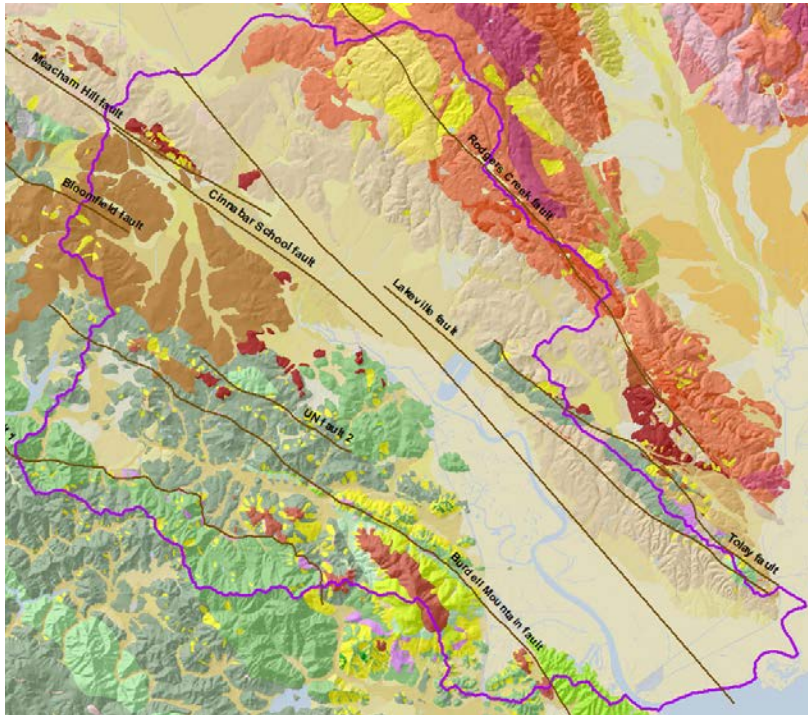


Petaluma Valley

# **LOCAL BASIN CONDITIONS**

# Petaluma Valley Groundwater Basin

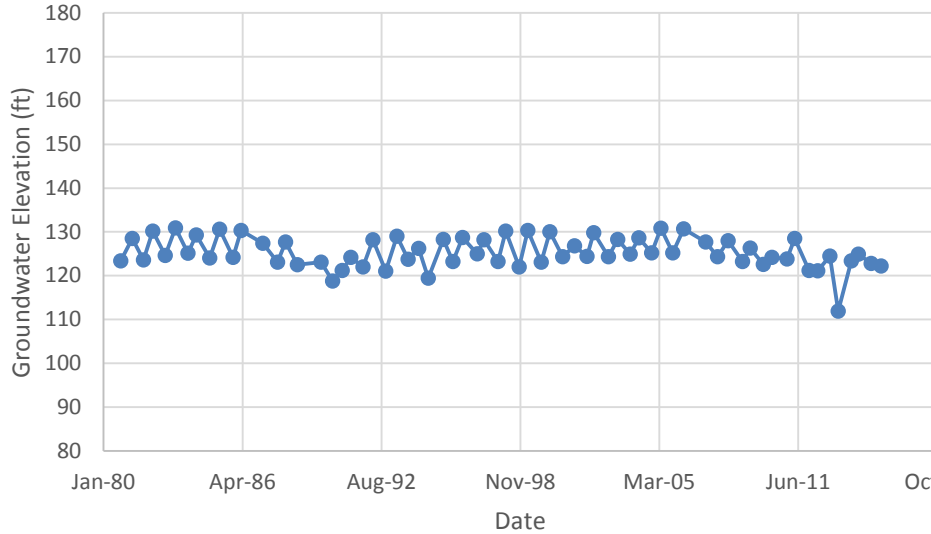
- Petaluma Valley Basin – 46,000 acres
- Stratigraphy - faulted, discontinuous



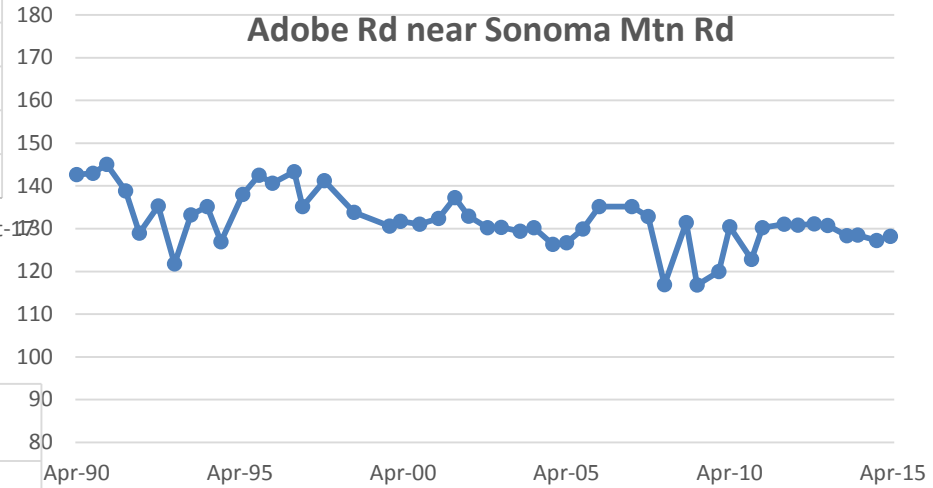
- Many aquifers with high clay content
- Well capacities relatively low
- Variable trends in groundwater levels

# Example Groundwater-Level Hydrographs

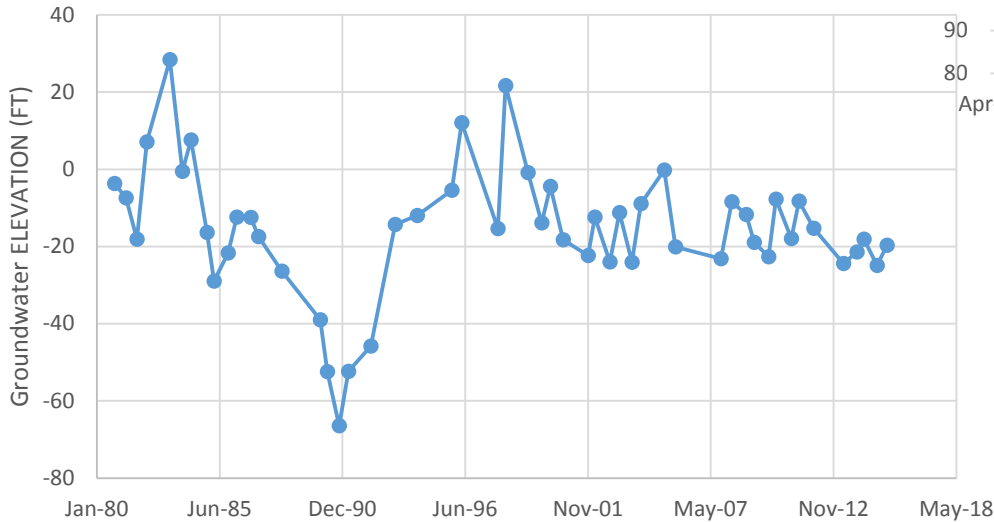
## Cleveland Ln and Western Ave



## Adobe Rd near Sonoma Mtn Rd



## Lakeville Hwy.



# Groundwater Quality Issues

Water quality inadequate for drinking water / potable standards in some areas

- Northwestern Area – Nitrates
- Southeastern Area – Salinity
  - Seawater intrusion
- Elevated Iron/Manganese in some areas

# U.S. Geological Survey Groundwater Study

- 3-Year Study scheduled for completion Fall 2017
  - Compiling & evaluating existing data
  - Collecting new data (geologic data, groundwater levels, groundwater quality and streamflows)
  - Developing groundwater flow model
- Will form technical foundation for developing **Groundwater Sustainability Plan** (required by SGMA)



# Help with Groundwater Study!

## Volunteers needed for Well-Level Measurements

- Measure only **groundwater depth, not usage**. Trained personnel measure groundwater **level** in your well.
- **FREE** – there is no cost to you!
- You will be informed of the water level below your property
- Help ensure that **localized conditions** of you and your neighbors are **included in the study**
- Participation is **confidential**

Contact  
**Leah Walker**  
City of Petaluma  
LWalker@ci.Petaluma.ca.us  
(707) 778-4583

# What's Happening Locally?

## 2015, getting started

- **Stakeholder Assessment completed**
- **Staff Working Group created** (of 12 countywide GSA-eligible agencies)
- **Facilitation services received** from state
- **Principles adopted** by GSA-eligible entities to commit to working together and with the public

# Striving to Engage, Keep Everyone Informed, and Garner Funding

## 2016

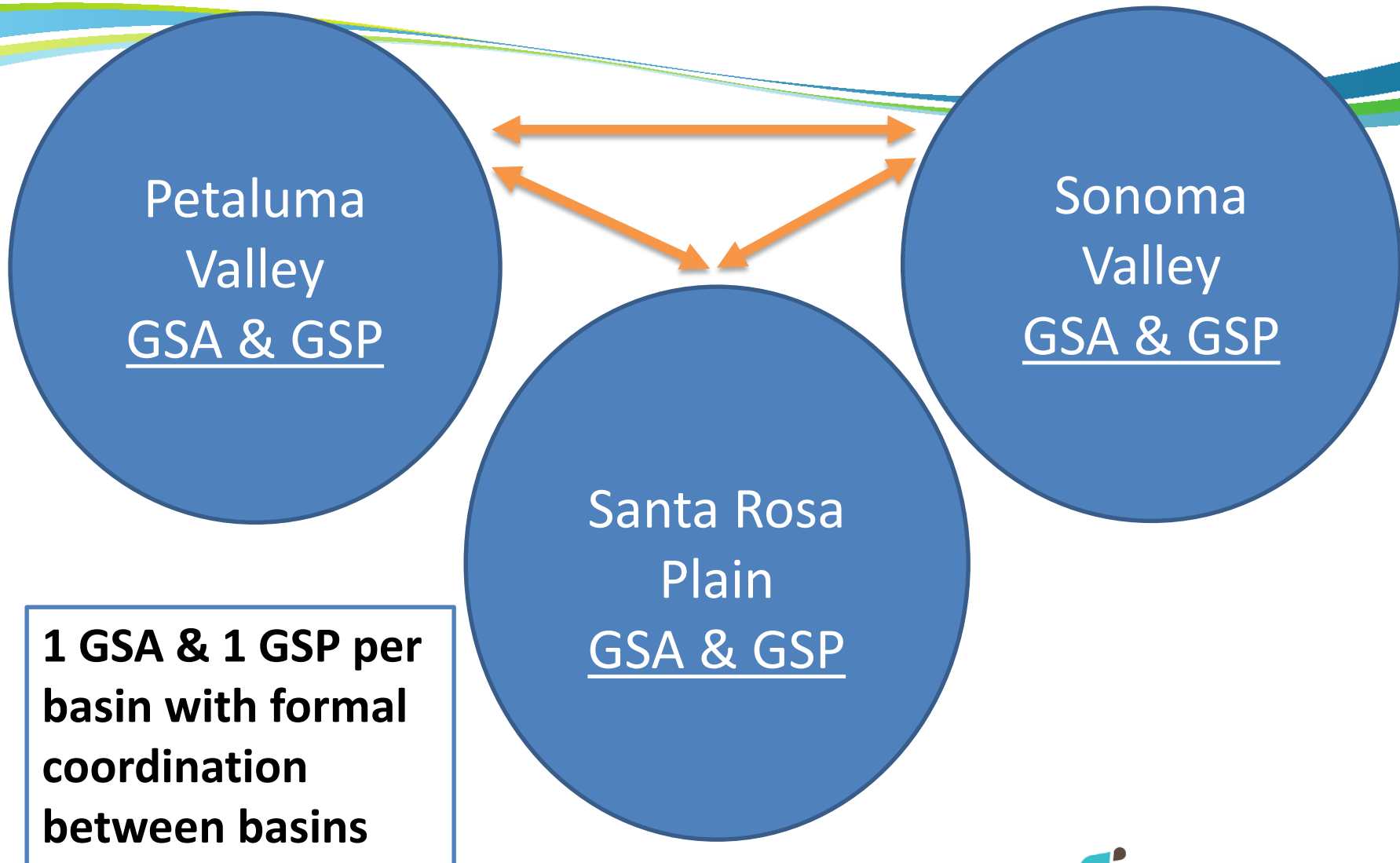
- **Basin Advisory Panel** providing periodic input
- **Public Workshops** (Fall 2015 + Summer 2016 + Fall 2016)
- **Website:** [www.sonomacountygroundwater.org](http://www.sonomacountygroundwater.org)
- **Monthly email updates** on SGMA activities
- Formal comments on California's GW sustainability plan **draft regulations** (Spring 2016)
- **Received \$250,000 Proposition 1 grant** for managing/sharing data across basins and with public
- **USGS study** ongoing



Forming a Groundwater Sustainability Agency

# **CURRENT THINKING IN PETALUMA VALLEY**

# Groundwater Sustainability Agency (GSA) Framework Structure



# Adopted Principles for Developing GSA Governance Options

- Build upon existing cooperation and successful water management efforts in Sonoma County
- Reinforce “local management” principles in SGMA
- Share resources and identify cohesive approach
- Costs should be equitably shared
- Represent community stakeholders through advisory committees
- Conduct robust and transparent outreach



# Petaluma Valley GSA Proposed Governance (Staff Proposal)

- **GSA Eligibility** (determined by State)
- **GSA Board:** One representative from each GSA-eligible entity
- **Representation:** Primary representative must be elected or appointed board/council member
- **Voting:** One vote per entity
- **Advisory body:** Created for stakeholder input
- **Funding/staffing:** Still under consideration

# Petaluma Valley Advisory Body Concepts (Staff Proposal)

- **Purpose:** Advise GSA Board on plan development & implementation
- **Appointments:** Formal application process
- **Terms:** Two-year terms
- **Transparency:** Public process, Brown Act meetings
- **Decision-making:** Protocols

# Petaluma Valley Advisory Body Concepts (Staff Proposal)



- Advise GSA Board on:
  - Development and implementation of Groundwater Sustainability plan
  - Regulations
  - Fees
  - Capital projects
  - Programs

# Petaluma Valley Advisory Body Membership (Staff Proposal)

## **Five at-large members appointed by each GSA-eligible agency:**

- Petaluma City Council
- NBWD Board
- Board of Supervisors
- SCWA Board of Directors
- Sonoma RCD Board of Directors

## **Five interest-based members:**

- Environmental representative
- Rural residential well owner
- Business community
- Agricultural interest (surface water or GW user)
- At-large community representative

# Final Decision Making on GSA Formation

- **Decision-makers:** Boards and Councils of GSA-eligible agencies make the ultimate decision on GSA formation.
- **Public Input:** Public officials and staff will listen and consider public input when evaluating options and making decisions
- **When?** Boards and Councils will consider recommendations in Fall/Winter 2016 (tentatively Oct. 3 for Petaluma City Council)
- **How?** Legal documents will be developed in Winter and Spring of 2016/2017

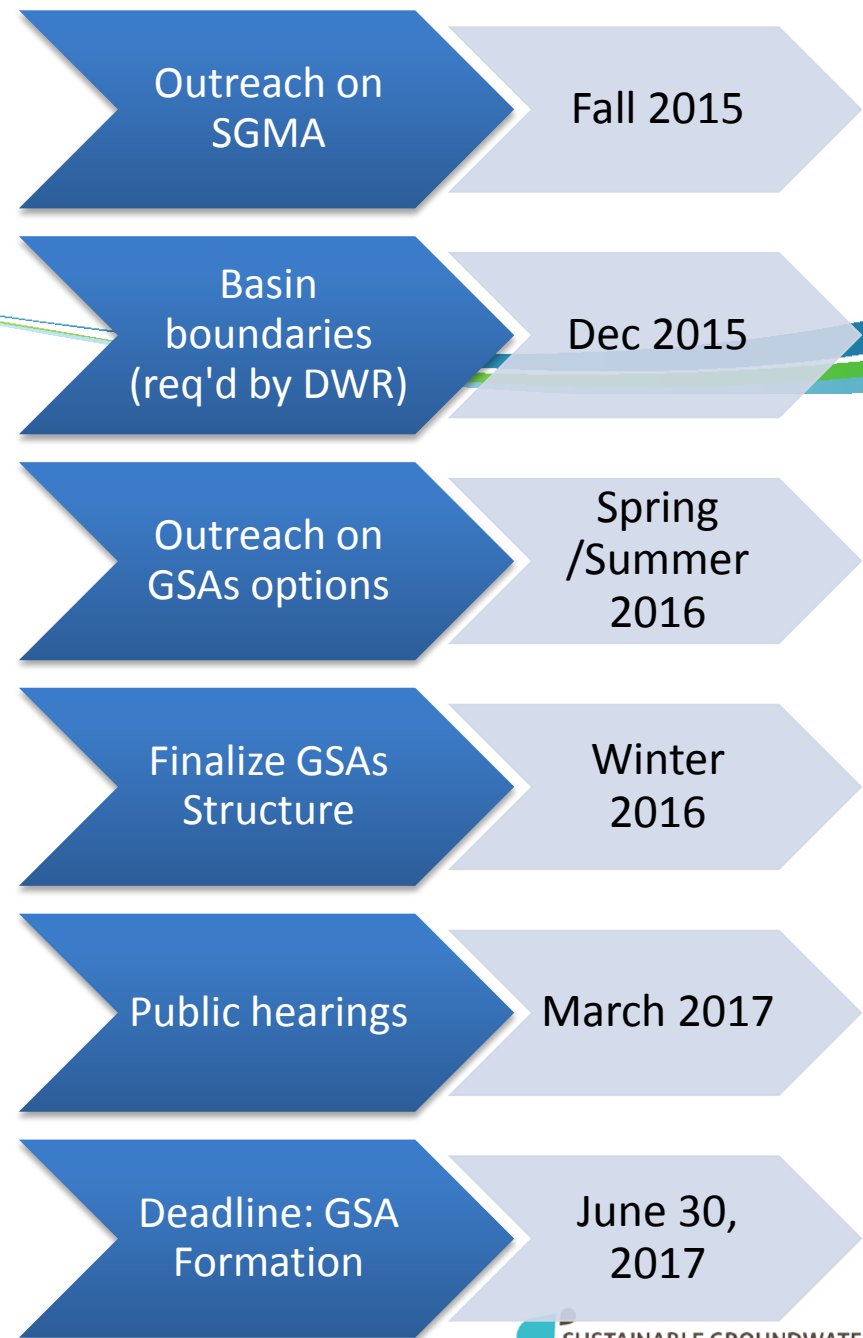
# What's Next: How Public Input will be Used for GSA Formation

- **Local public officials and staff are committed to keeping the public informed**, providing the public with balanced and objective information to assist the public in understanding SGMA, the governance options, and recommendations
- **Local public officials and staff will listen and consider public input** when evaluating options and making decisions



# What's Next

- Summer: Public input on GSA structures
- Summer/Fall: Continue development of GSAs
- Fall/Winter: Proposals Considered by Councils/Boards
- Winter/Spring: Legal documents developed



# Resources & Email List

[www.sonomacountygroundwater.org](http://www.sonomacountygroundwater.org)

Ann DuBay

[ann.dubay@scwa.ca.gov](mailto:ann.dubay@scwa.ca.gov) or 707-524-8378

Share Contact Info Today to Join Email List

**Name – email - phone**

# What do you think?

- 10-Minute Table Top Conversations
- Large Group Discussion

# What do you think?

## Discussion Topics



What are your thoughts on GSA governance related to:

- GSA board representation, composition and voting?
- Advisory body representation and role?
- Other concerns?