

PUBLIC HEARING
Creation of Santa Rosa Plain
Groundwater Sustainability Agency
June 1, 2017



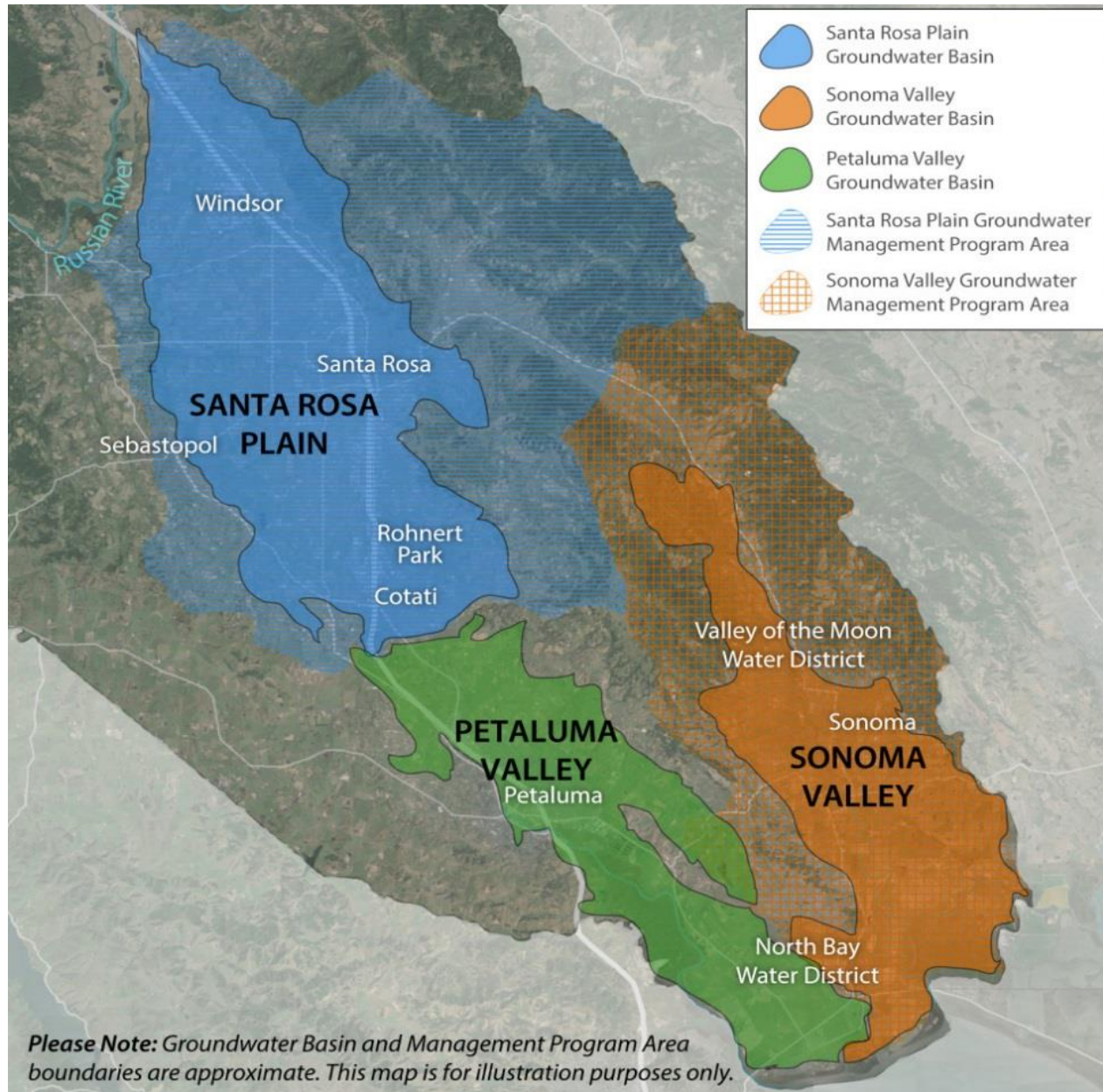
***Jay Jasperse, Chief Engineer/Director of Groundwater
Management, Sonoma County Water Agency***
***Brittany Jensen, Executive Director, Gold Ridge Resource
Conservation District***

Presentation

- Purpose of Item
- SGMA GSA Requirements
 - Authorities
 - Consideration of Interested Parties
 - Notice and Public Hearing
- GSA Structure
- Recommended Actions
- Public Hearing
- Board Action

SGMA Summary

- Became law in 2015
- Affects High and Medium Priority Basins, including Santa Rosa Plain Basin



Required Steps to Groundwater Sustainability

Step one

Form
Groundwater
Sustainability
Agency
June 30, 2017

Step two

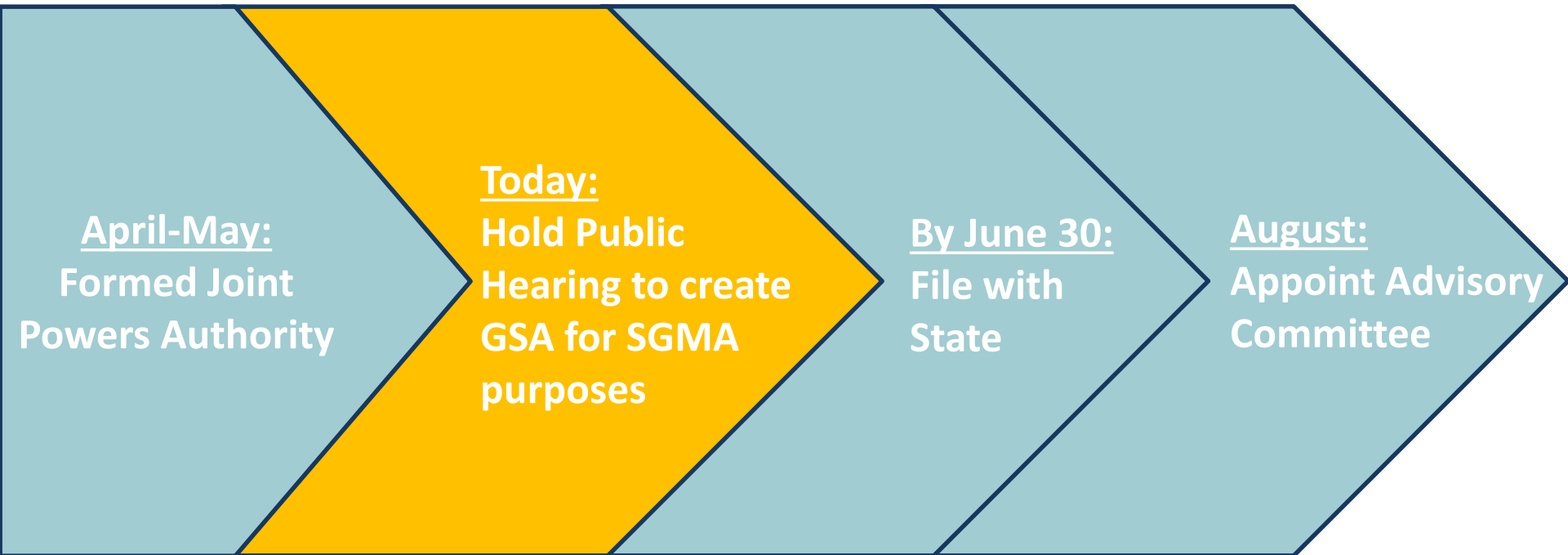
Develop
Groundwater
Sustainability
Plan
January 31, 2022

Step three

Achieve
Sustainability
20 years after
adoption of
plan*

* DWR may grant up to two, five-year extensions on implementation upon showing of good cause and progress

Step One: Forming the GSA



GSA Management Authorities

Groundwater Sustainability Agencies have authority to:

- Conduct studies
- Register & monitor wells
- Set well spacing requirements
- Require extraction reporting
- Regulate extractions
- Implement capital projects
- Assess fees to cover costs

Required to Develop Groundwater Sustainability Plan by 2022



GSP Requirements

Groundwater Sustainability Plans require:

- Description of the basin, using a hydrologic conceptual model
- Development of management areas within the basin
- Description of the basin-specific monitoring network
- Identification of minimum thresholds, measurable objectives, monitoring, or project and management actions based on unique local conditions

Must be completed by January 31, 2022

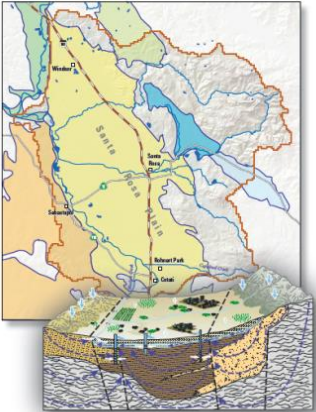


Recent Studies and Voluntary Planning Provide Foundation for Addressing SGMA

USGS
science for a changing world

Prepared in cooperation with Sonoma County Water Agency, Sonoma County, City of Santa Rosa, City of Sebastopol, City of Rohnert Park, City of Cotati, Town of Windsor, Sonoma County, and California American Water

Simulation of Groundwater and Surface-Water Resources of the Santa Rosa Plain Watershed, Sonoma County, California



Scientific Investigations Report 2014-5052

Key USGS Findings

Imbalance in the amount of inflows and outflows to the basin - could be exacerbated by future climate change



Potential for lowering of groundwater levels, reduction of streamflows and affect on ecosystems

Local Response


Proactively and voluntarily develop non-regulatory Groundwater Management Plan



Collaborative Stakeholder-driven Process

Santa Rosa Plain Groundwater

Final Draft Santa Rosa Plain Watershed Groundwater Management Plan
October 2014 | Prepared by the Santa Rosa Plain Basin Advisory Panel



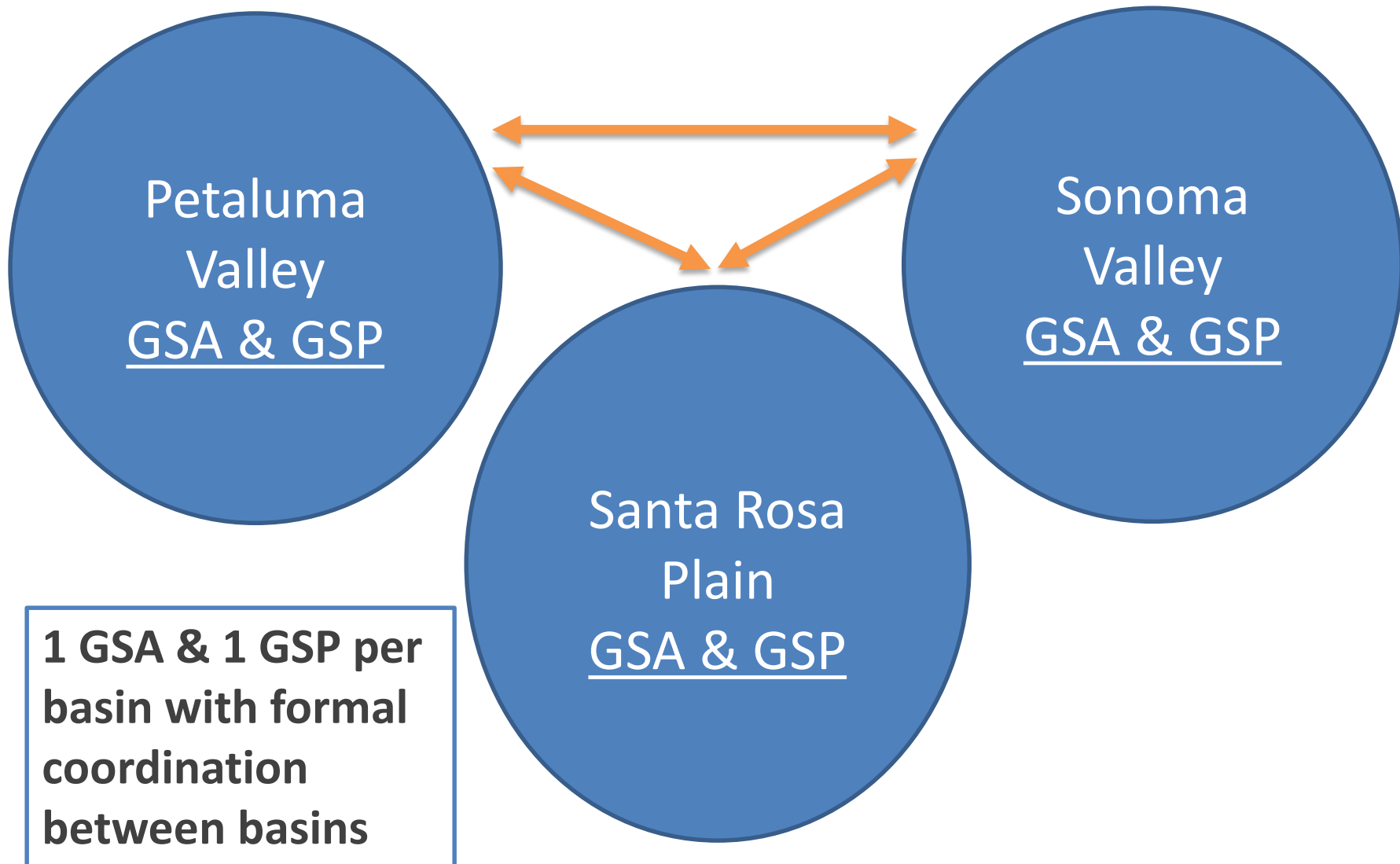
Consideration of Interested Parties

GSA's must consider "all interests of all beneficial uses and users of groundwater" including:

- Agriculture
- Domestic users
- Public & private water systems
- Tribes
- Environmental users
- Disadvantaged communities
- Others



Groundwater Sustainability Agency (GSA) Framework Structure



Possible Areas of Coordination Between Basins

- Grant writing and funding requests
- Data framework/management system
- Basin boundary adjustments
- Any activities that impact the adjacent basin
- Communication with state and federal agencies
- Public outreach and stakeholder engagement
- Monitoring protocols and coordination with adjacent basins
- Staffing

Local Implementation: Agencies Participating in GSAs

PETALUMA VALLEY	SANTA ROSA PLAIN	SONOMA VALLEY
City of Petaluma	City of Cotati	City of Sonoma
North Bay Water District	City of Rohnert Park	Valley of the Moon Water District
County of Sonoma	City of Santa Rosa	North Bay Water District
Sonoma County Water Agency	Town of Windsor	County of Sonoma
Sonoma Resource Conservation District	County of Sonoma	Sonoma County Water Agency
	Sonoma County Water Agency	Sonoma Resource Conservation District
	Sonoma Resource Conservation District	
	Gold Ridge Resource Conservation District	
	Mutual-PUC Regulated Water Companies	

Voting:

Santa Rosa Plain GSA Board

- **Voting:** One vote per entity
 - Simple majority for “housekeeping” (contracts, setting meeting dates, etc.)
 - Super-majority vote (75%) needed for fees, regulations, budgets
 - Unanimous vote needed to assess entities (if additional funds are needed for operating the GSA)

New Members:

Santa Rosa Plain GSA Board

- A GSA-eligible entity that is being formed can serve as an ex-officio member of the GSA Board if:
 - Formation has been approved or conditionally approved by the LAFCO board
- When formation is completed, the entity becomes voting member if it
 - Meets financial commitment
 - Agrees to JPA

Mutual & PUC-Regulated Water Companies: Santa Rosa Plain GSA Board

- SGMA allows water companies regulated by the Public Utilities Commission and mutual water companies to participate in a GSA through a legal agreement
- Mutual & PUC-regulated water companies in Santa Rosa Plain developing an MOU among themselves and another MOU with GSA
- One representative from Mutual-PUC group will serve on GSA Board
- Mutual-PUC group committed to funding

Periodic Check-In: Santa Rosa Plain GSA Board

To ensure that agreement meets GSA needs, a public review will be held:

- After initial fee study
- After Groundwater Sustainability Plan is adopted
- Every 10 years after GSP adoption

Santa Rosa Plain GSA Advisory Committee

- **Strong advisory body:** Created for stakeholder input
- **Purpose:** Advise GSA Board on plan development & implementation
- **Appointments:** Formal application process
- **Representation:** Most entities prefer advisory panel open to community members and staff
- **Terms:** Two-year terms
- **Transparency:** Public process, Brown Act meetings
- **Decision-making:** Charter & protocols

Advisory Committee Role

Advise GSA Board on:

- Development and implementation of Groundwater Sustainability plan
- Regulations
- Fees
- Capital projects
- Programs
- Communications with stakeholder constituencies

Santa Rosa Plain GSA

Advisory Committee Composition

APPOINTMENTS BY ENTITIES	AT-LARGE APPOINTMENTS
<p>One from each entity participating in GSA:</p> <ol style="list-style-type: none"> 1. Cotati 2. Rohnert Park 3. Santa Rosa 4. Windsor 5. Sonoma County 6. Sonoma County Water Agency 7. Sonoma Resource Conservation District 8. Gold Ridge Resource Conservation District 9. Mutual/PUC appointed 10. Graton Rancheria* 11. Sebastopol* 	<p>Represent SGMA-defined stakeholders:</p> <ol style="list-style-type: none"> 1. Environmental representative 2. Environmental representative 3. Rural residential well owner 4. Rural residential well owner 5. Business community representative 6. Agricultural interest (surface water or GW user) 7. Agricultural interest (surface water or GW user)
<p>Total of 11 (*Graton Rancheria and Sebastopol, while not serving on the GSA board, will make their own Advisory Committee appointments)</p>	<p>Total of 7</p>
<p>Appointed by Boards and Councils</p>	<p>Appointed by GSA Board</p>
<p>Each entity determines process</p>	<p>Formal application process</p>

Public Hearing

- **Before forming a groundwater sustainability agency there shall be public hearing in the county or counties overlying the basin.**

Recommended Actions

- **Adopt a Resolution of Intention to be the Groundwater Sustainability Agency for the Santa Rosa Plain Subbasin; and**
- **Authorize the filing of the GSA Formation Notification, along with required supporting documentation, with the California Department of Water Resources.**