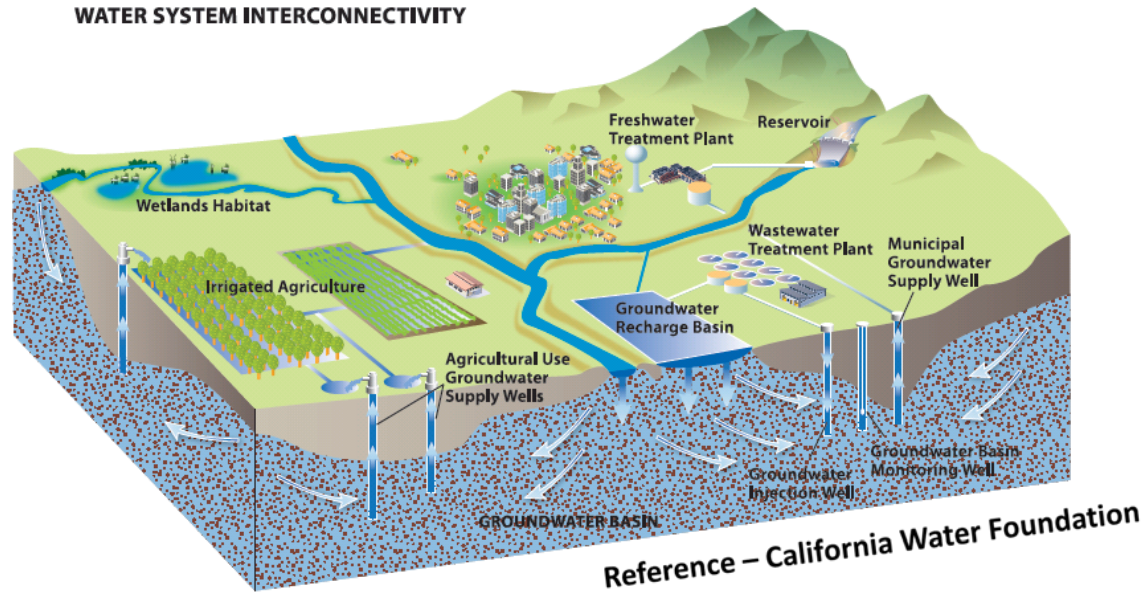


Update on Sustainable Groundwater Management Act in Sonoma County



Sonoma Valley Workshop

June 30, 2016

Presentation Overview



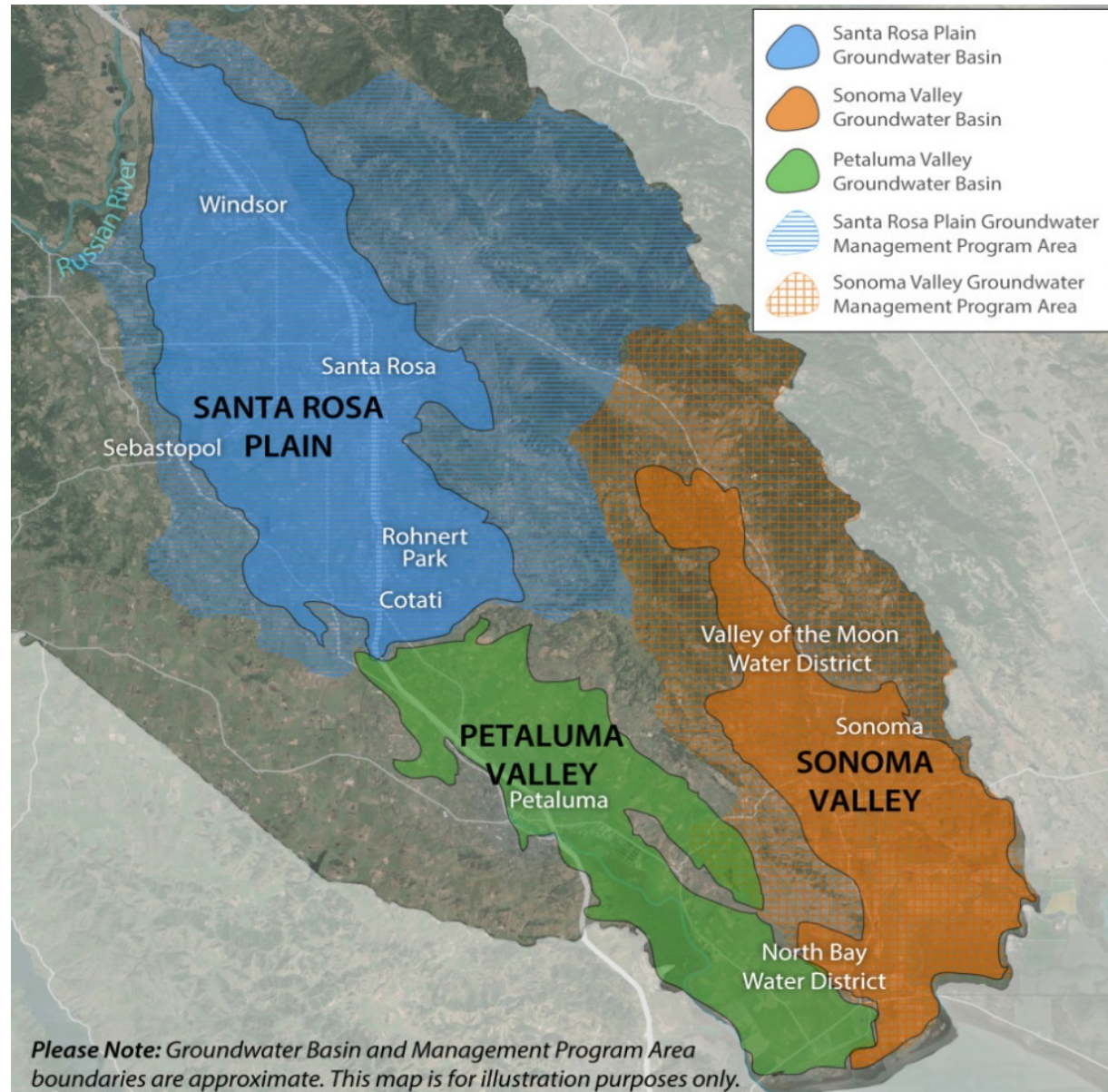
- **Brief Summary:** Sustainable Groundwater Management Act Requirements
- **Implementation in Sonoma County**
 - Forming Groundwater Sustainability Agencies
 - Public/Stakeholder Involvement
- **What do You Think?**
- **Next Steps/Timeline**

SGMA Brief Summary

Became law on
1/1/2015

Applies statewide
to medium and
high priority basins

In Sonoma County,
affects Santa Rosa
Plain, Sonoma
Valley, Petaluma
Valley



Required Steps to Groundwater Sustainability

Step one

Form
Groundwater
Sustainability
Agency
June 30, 2017

Step two

Develop
Groundwater
Sustainability
Plan
January 31, 2022

Step three

Achieve
Sustainability
20 years after
adoption of
plan*

* DWR may grant up to two, five-year extensions on implementation upon showing of good cause and progress

Form Groundwater Sustainability Agencies (GSAs) by June 2017

- Local agency or combination of local agencies
- “Local agency” is any public agency that has responsibilities for at least one of the following:
 - Supplies water
 - Manages water
 - Controls land use
- Counties are the default GSA in “unmanaged” areas
- Can be more than one GSA in basin

Management Authorities under SGMA

Groundwater Sustainability Agencies have authority to:

- Conduct studies
- Register & monitor wells
- Set well spacing requirements
- Require extraction reporting
- Regulate extractions
- Implement capital projects
- Assess fees to cover costs

Required to Develop Groundwater Sustainability Plan by 2022



Domestic Wells and SGMA

Source: State Water Resources Control Board

Referred to as “de minimis” users in SGMA

- Use 2 acre-feet per year or less for domestic purposes

De minimis users are subject to SGMA, depending on local needs

- GSAs will decide how de minimis users are incorporated
- GSAs can decide to exclude or include
- GSAs can decide on fees
- GSAs *cannot* require metering
- May be subject to reporting and fees to state if intervention occurs

Domestic wells can also be regulated by authorities (counties and cities, etc.) outside the scope of SGMA

SGMA-Required Interested Parties

GSA must consider “all interests of all beneficial uses and users of groundwater” including:

- All categories of Groundwater Users
- Agriculture
- Domestic Well Users
- Municipal Well Operators and Public Water Systems
- Native American Tribes
- County
- Planning Departments / Land Use
- Local Landowners
- Disadvantaged Communities
- Business
- Federal Government
- Environmental Uses
- Surface Water Users (if connection between surface and ground water)

Local Implementation: GSA-Eligible Agencies

SANTA ROSA PLAIN BASIN	PETALUMA VALLEY BASIN	SONOMA VALLEY BASIN
City of Cotati	City of Petaluma	City of Sonoma
City of Rohnert Park	North Bay Water District	North Bay Water District
City of Santa Rosa	Sonoma County	Valley of the Moon Water District
City of Sebastopol	Sonoma County Water Agency	Sonoma County
Town of Windsor	Sonoma Resource Conservation District	Sonoma County Water Agency
Sonoma County		Sonoma Resource Conservation District
Sonoma County Water Agency		
Sonoma Resource Conservation District		

What's Happening Locally?

2015, getting started

- **Stakeholder Assessment completed**
- **Staff Working Group created** (of 12 countywide GSA-eligible agencies)
- **Facilitation services received** from state
- **Principles adopted** by GSA-eligible entities to commit to working together and with the public

Striving to Engage, Keep Everyone Informed, and Garner Funding

2016

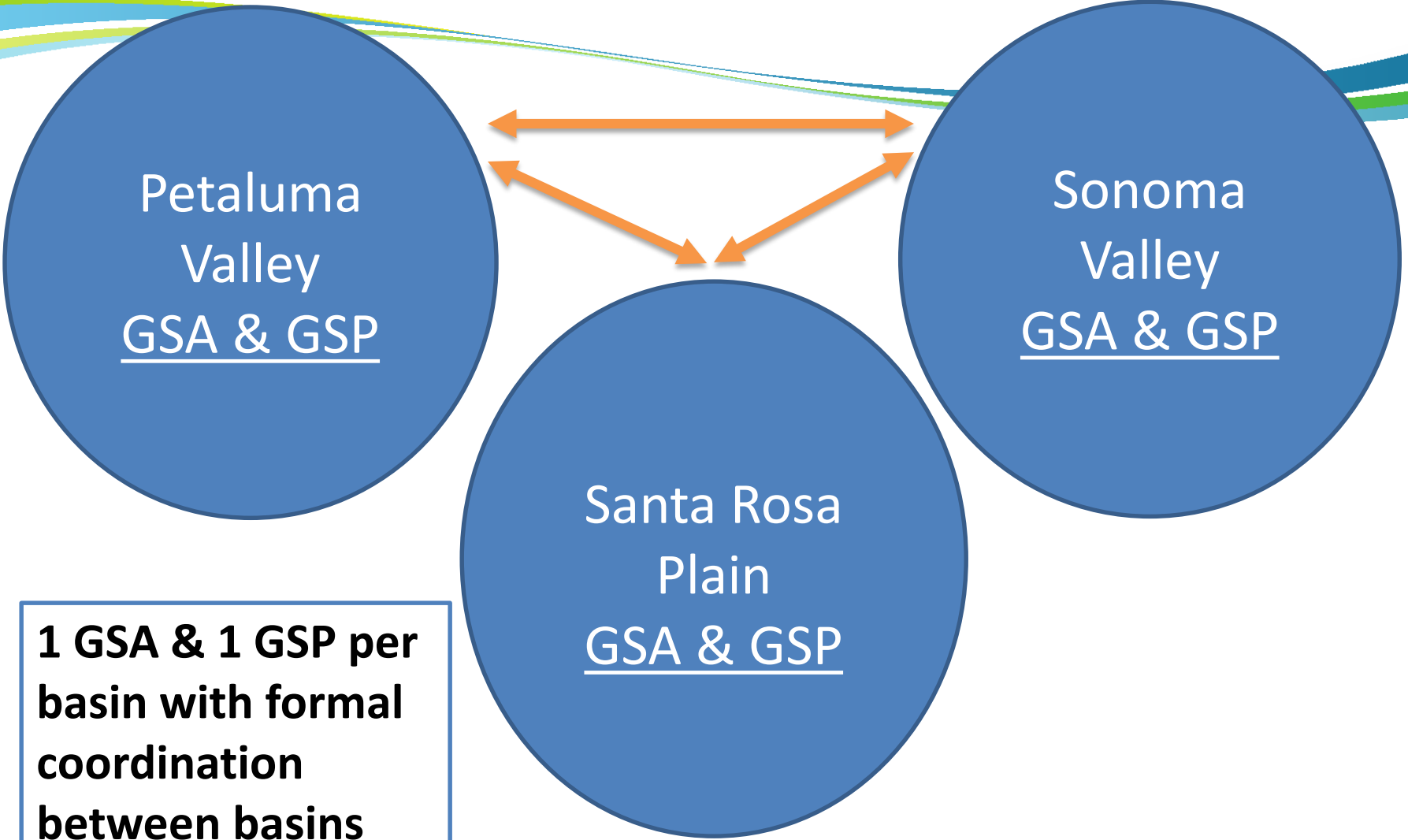
- **Basin Advisory Panel** providing periodic input
- **Public Workshops** (Fall 2015 + Summer 2016 + Fall 2016)
- **Website:** www.sonomacountygroundwater.org
- **Monthly email updates** on SGMA activities
- Formal comments on California's GW sustainability plan **draft regulations** (Spring 2016)
- **Received \$250,000 Proposition 1 grant** for managing/sharing data across basins and with public
- Existing **GW management programs** continue



Forming a Groundwater Sustainability Agency

CURRENT THINKING IN SONOMA VALLEY

Groundwater Sustainability Agency (GSA) Framework Structure



1 GSA & 1 GSP per basin with formal coordination between basins

Adopted Principles for Developing GSA Governance Options

- Build upon existing cooperation and successful water management efforts in Sonoma County
- Reinforce “local management” principles in SGMA
- Share resources and identify cohesive approach
- Costs should be equitably shared
- Represent community stakeholders through advisory committees
- Conduct robust and transparent outreach

Sonoma Valley GSA Proposed Governance

(Staff Proposal)

- **GSA Eligibility** (determined by State)
- **GSA Board:** One representative from each GSA-eligible entity
- **Representation:** Must be elected or appointed board/council member (not staff)
- **Voting:** One vote per entity
- **Advisory body:** Created for stakeholder input
- **Funding/staffing:** Still under consideration

Sonoma Valley Advisory Body Concepts (Staff Proposal)

- **Purpose:** Advise GSA Board on plan development & implementation
- **Appointments:** Formal application process
- **Terms:** Two-year terms
- **Transparency:** Public process, Brown Act meetings
- **Decision-making:** Charter & protocols

Sonoma Valley Advisory Body Membership (Staff Proposal)

Six at-large members appointed by each GSA-eligible agency:

- Sonoma City Council
- VOMWD Board
- NBWD Board
- Board of Supervisors
- SCWA Board of Directors
- Sonoma RCD Board of Directors

Five interest-based members:

- Environmental representative (from an organization with a presence in Sonoma Valley GW basin)
- Rural residential well owner
- Business community
- Agricultural interest (surface water or GW user)
- At-large community representative

Final Decision Making on GSA Formation

- **Decision-makers:** Boards and Councils of GSA-eligible agencies make the ultimate decision on GSA formation.
- **Public Input:** Public officials and staff will listen and consider public input when evaluating options and making decisions
- **When?** Boards and Councils will consider recommendations in Fall/Winter 2016
- **How?** Legal documents will be developed in Winter and Spring of 2016/2017

What do you think?

- 10-Minute Table Top Conversations
- Large Group Discussion

What do you think?

Discussion Topics



What are your thoughts on GSA governance related to:

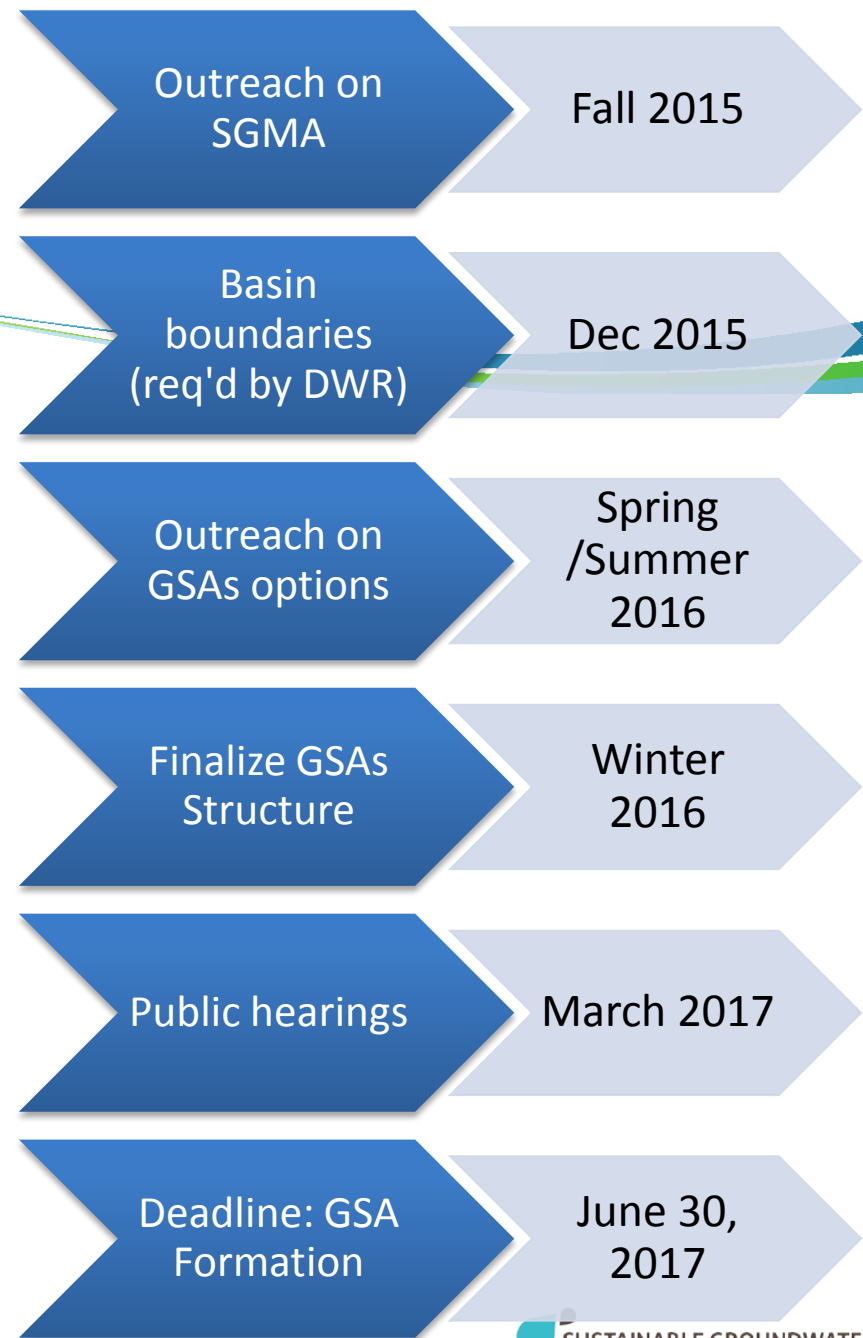
- GSA board representation, composition and voting?
- Advisory body representation and role?
- Other concerns?

What's Next: How Public Input will be Used for GSA Formation

- **Local public officials and staff are committed to keeping the public informed**, providing the public with balanced and objective information to assist the public in understanding SGMA, the governance options, and recommendations
- **Local public officials and staff will listen and consider public input** when evaluating options and making decisions

What's Next

- Summer: Public input on GSA structures
- Summer/Fall: Continue development of GSAs
- Fall/Winter: Proposals Considered by Councils/Boards
- Winter/Spring: Legal documents developed



Resources & Email List

www.sonomacountygroundwater.org

Ann DuBay

ann.dubay@scwa.ca.gov or 707-524-8378

Share Contact Info Today to Join Email List

Name – email - phone